

MEDICAL PHOTON SYSTEM (MPS 912)

Manual

When you received the package verify first the delivered parts as ordered

SCOPE OF DELIVERY STANDARD PACKAGE:

- Control unit MPS 912 (1)
- Photonic hand electrodes (2)
- Power unit AC 100-260 V/7.5 V DC (3)
- Connecting cables (2)



DEVICE TECHNICAL DATA:

- DC current 7.5-9 V x 0.25 -2.5 A depending on the application
- External input: 2 channels x 100-ohm input impedance
- Photonic radiators (electrodes): 2 x 1 4 colors high power LED
- Wavelength: 450 nm, 525 nm, 630 nm, white neutral
- Modulation: AC 0.5 – 999 Hz
- Optional tesla coil Magnetic field: 400 micro Tesla noise diode 0.6-600 Hz
- Dimensions: 270 x 170 x 110 mm
- Photonic electrodes: 160 x 25 mm Alu/Acryl
- Weight: 1.2 Kilo

DEVICE SAFETY:

MPS 912 device cannot be stored in humid rooms or close to heat sources such as heating devices, A/C. Place the device minimum 2-4 meters away from such sources.

Device should not be placed close to windows with intense direct sun radiation.

Cables and wires should be handled with care and torsion free. Please use only the original cables received.

Keep about 1-2 meters distance between credit cards or any other information storage media and the device.

If you have any technical problems, contact our team or distributors and do not try to open the device and make repairs at your end.

MPS 912 device does not need maintenance; you just make some cleaning of electrodes when changing the patient. The photon sources are guaranteed for 10000 hours, corresponding to 11 years.

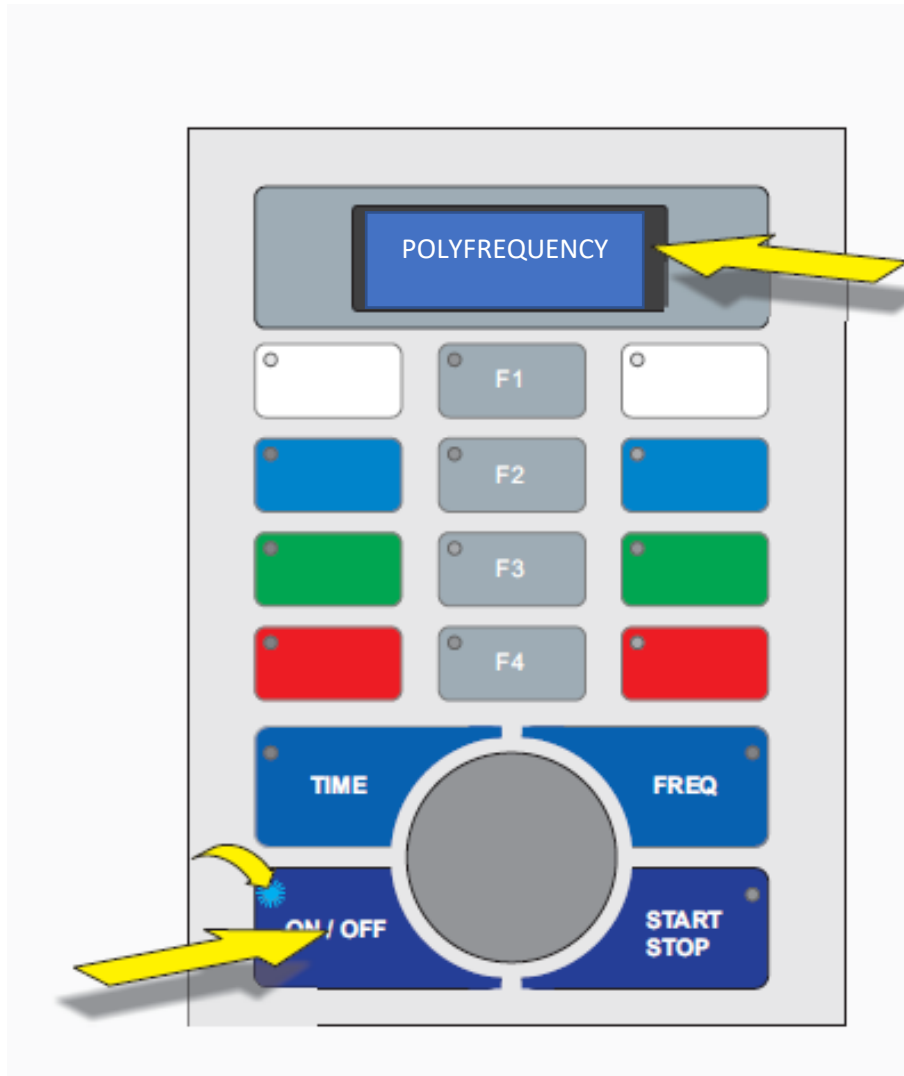
COMMISSIONING MPS 912 DEVICE:

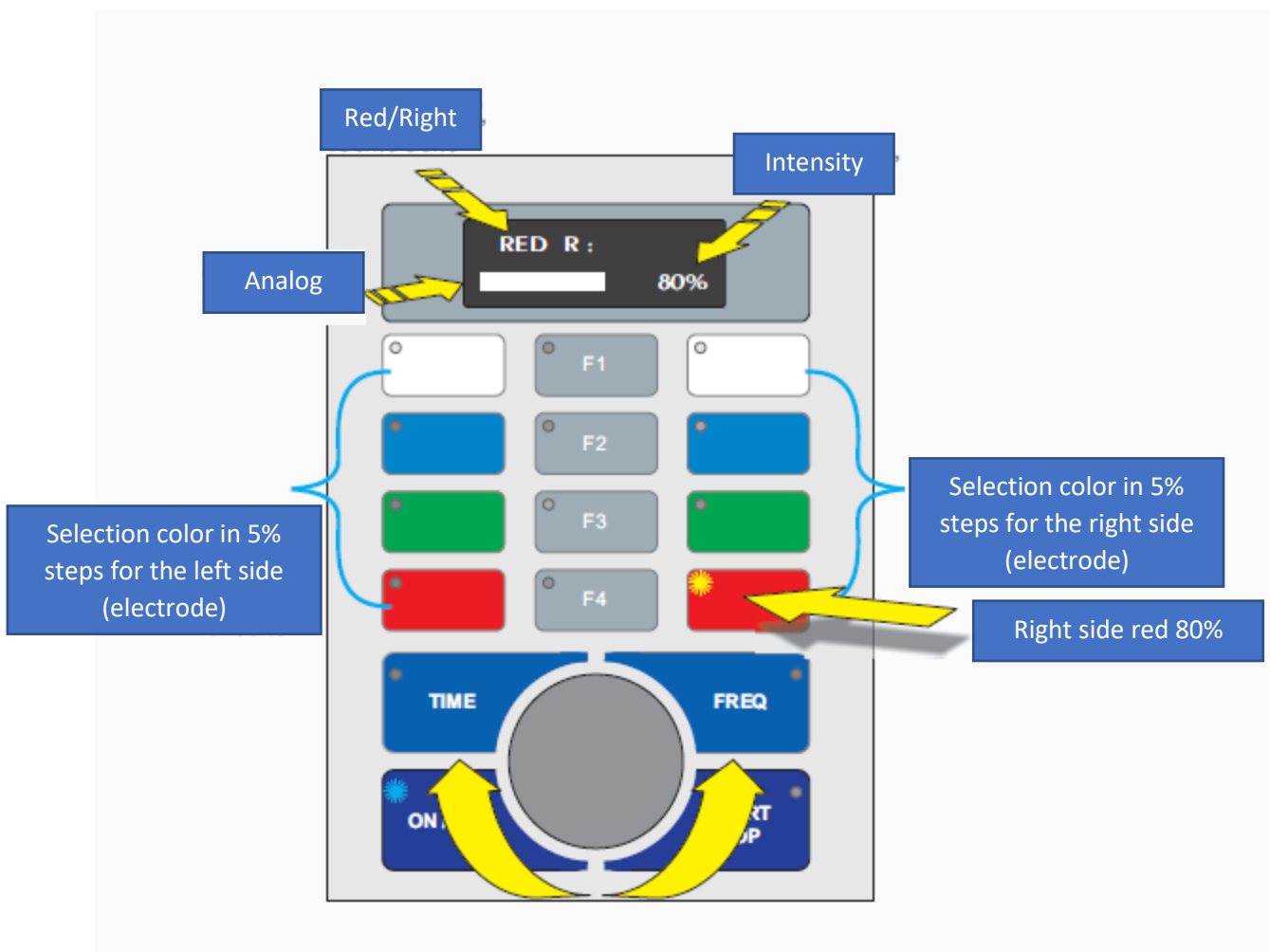
1. Connect first the device to the power unit (OFF position)
2. Connect the two photon electrodes
3. If you have any external frequency source(s) emitting (audio-signals) you can connect these to MPS 912
4. With the ON/OFF button you switch the device on/off; some parameters such as Light Color, Light Intensity and Therapy Time are pre-set from the factory; however, you can change and save the individual parameters you selected at your end

INDIVIDUAL SETTINGS:

With the central knob you can select any parameters. Press the function key (Time, Frequency) and a control LED will lighten.

You can select different colors and save these by just a short pressing of the color key. Never select 100% intensity on both electrodes to avoid electrodes warming up. See below image!





FREQUENT SELECTION:

With the central large knob, you can select the frequency for the emphasized therapy; Press the key FREQ and the control LED will lighten right away.

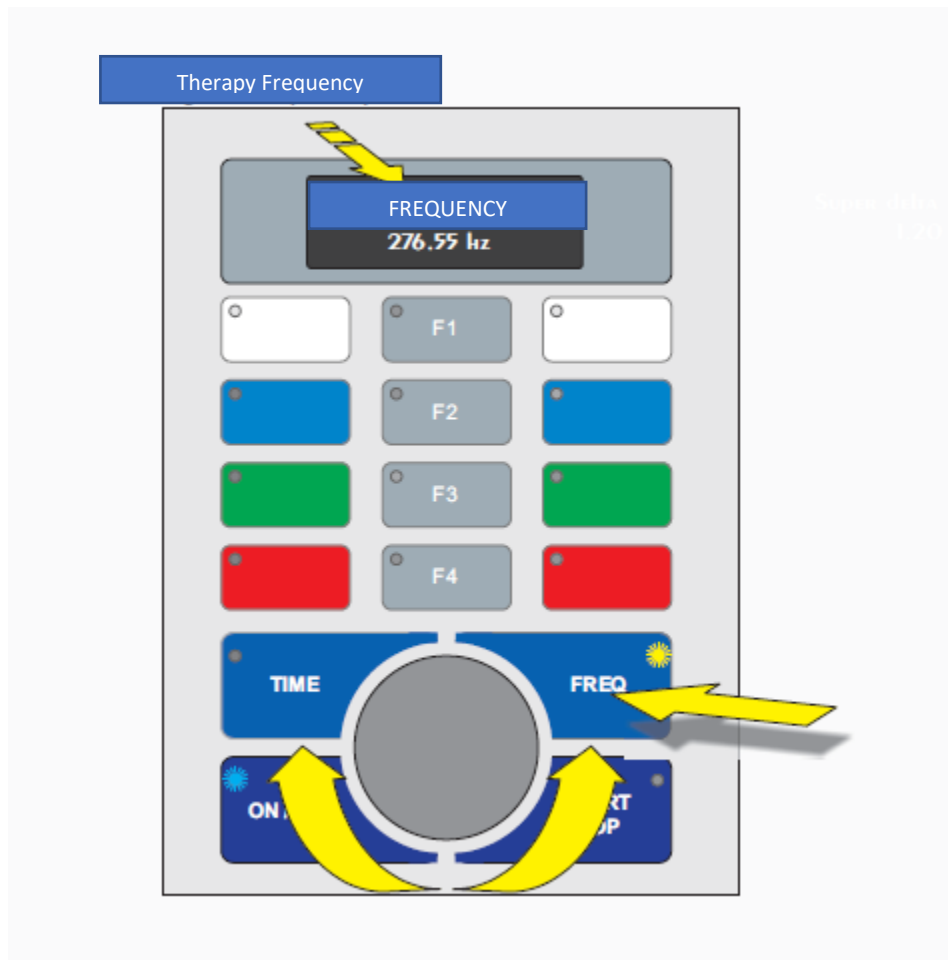
On the display you see first "POLYFREQUENCY"; turn the central knob toward left and it will appear "EXTERN". Turn more to the left, you will hear a sound signal showing you reached the frequency limit value

Turn again the central knob to the right and it will appear following frequencies (options for your settings):

1. **Super Delta: 1.20 Hz**
2. **Delta: 2.40 Hz**
3. **Theta: 4.6 Hz**
4. **Global: 7.81 Hz**
5. **Slow Alpha: 8.20 Hz**
6. **Alpha: 11.20 Hz**
7. **Slow Beta: 16.60 Hz**
8. **Beta: 33.50 Hz**

9. Gamma: 76.00 Hz

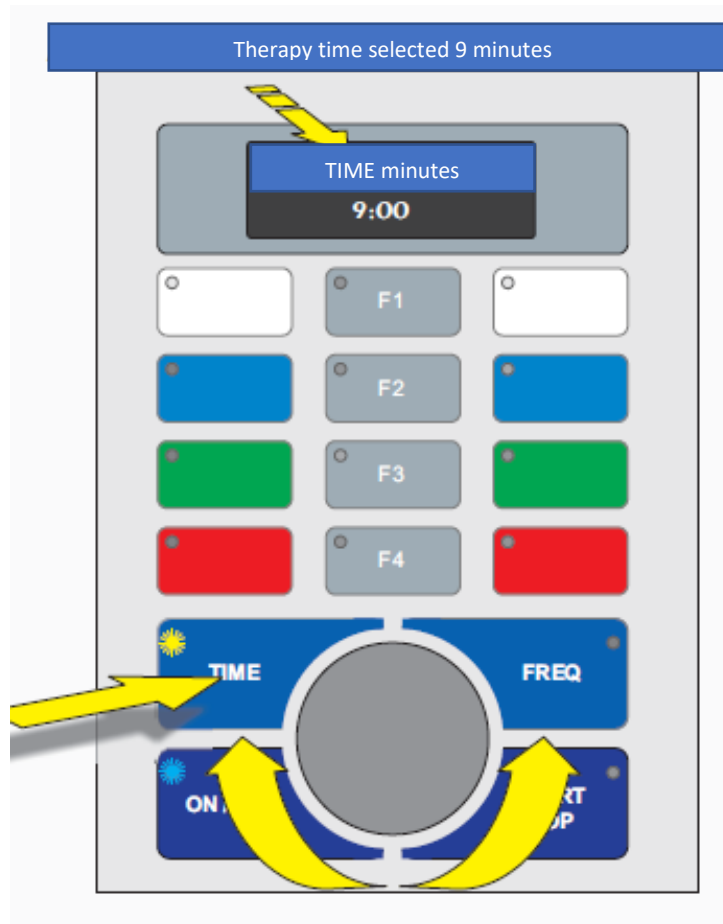
- Press a second time the FREQ key and now you can set up the desired frequency in the range 0.5 Hz up to 9999 Hz.
- Turn the central knob quickly to set up the frequency before the coma.
- Turn the knob lower and like this you select the values after coma.
- You can save all selected frequencies or reset them again.
- To save the individually selected frequencies you have functions F1, F2, F3 and F4. To store the selected frequency, after selection just press one of the F1-F4 keys, press until you will hear a signal ton. Next time you just can select FREQ and F1, or F2 and the selected/saved frequency will appear



THERAPY DURATION SETTINGS:

- Press the key TIME, and a lightening LED will confirm that the key was activated. You can set up the therapy time in 30 seconds steps up to 30 minutes. The device comes with 5 minutes therapy duration.
- To change the factory settings regarding therapy duration, press again TIME a little longer until you will hear a signal ton. Same as in the case of frequency

settings, turn the knob until desired therapy time was reached and save. Press the key again until you will hear a short signal, now the new therapy time is saved. Usual therapy time are 5-10 minutes. You can shut-down the therapy at any time by pressing STOP.



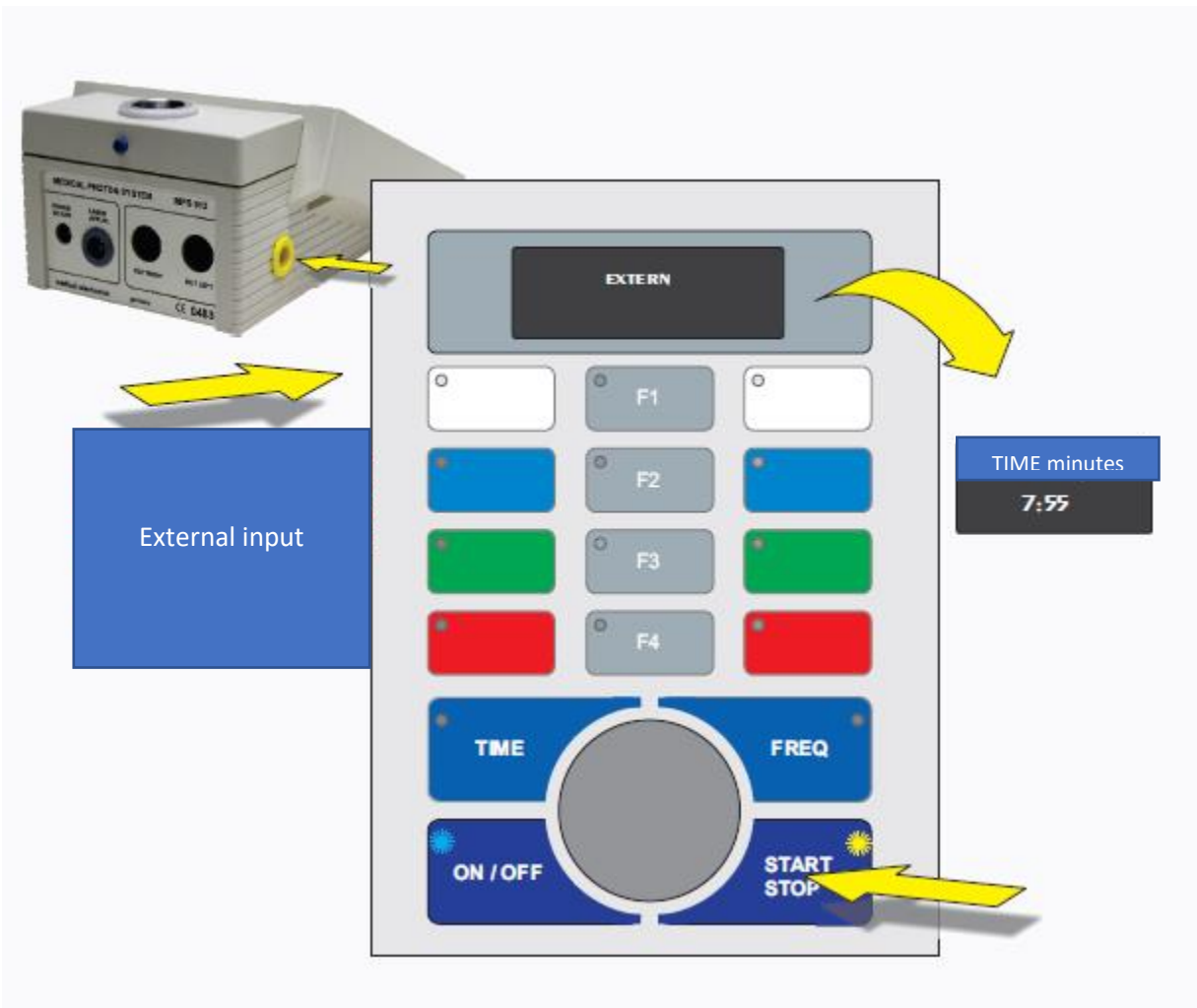
THERAPY STARTING:

After having selected the desired therapy parameters: Frequency, Color hand electrodes and therapy duration position the patient in a comfortable position and start the therapy by pressing the button START. The rest therapy duration is dynamically shown in the display. Devices shuts down automatically when therapy time was exhausted.

During the therapy some keys are blocked, and some are free:

Regular therapy: with no extra external audio signal, all the keys are possible to be activated, stopped and restarted.

Therapy with external emitter: when an external audio device/signal was connected, the START/STOP button is blocked, and the therapy shuts down automatically when the external signal stopped emitting.



MPS 912 Connections

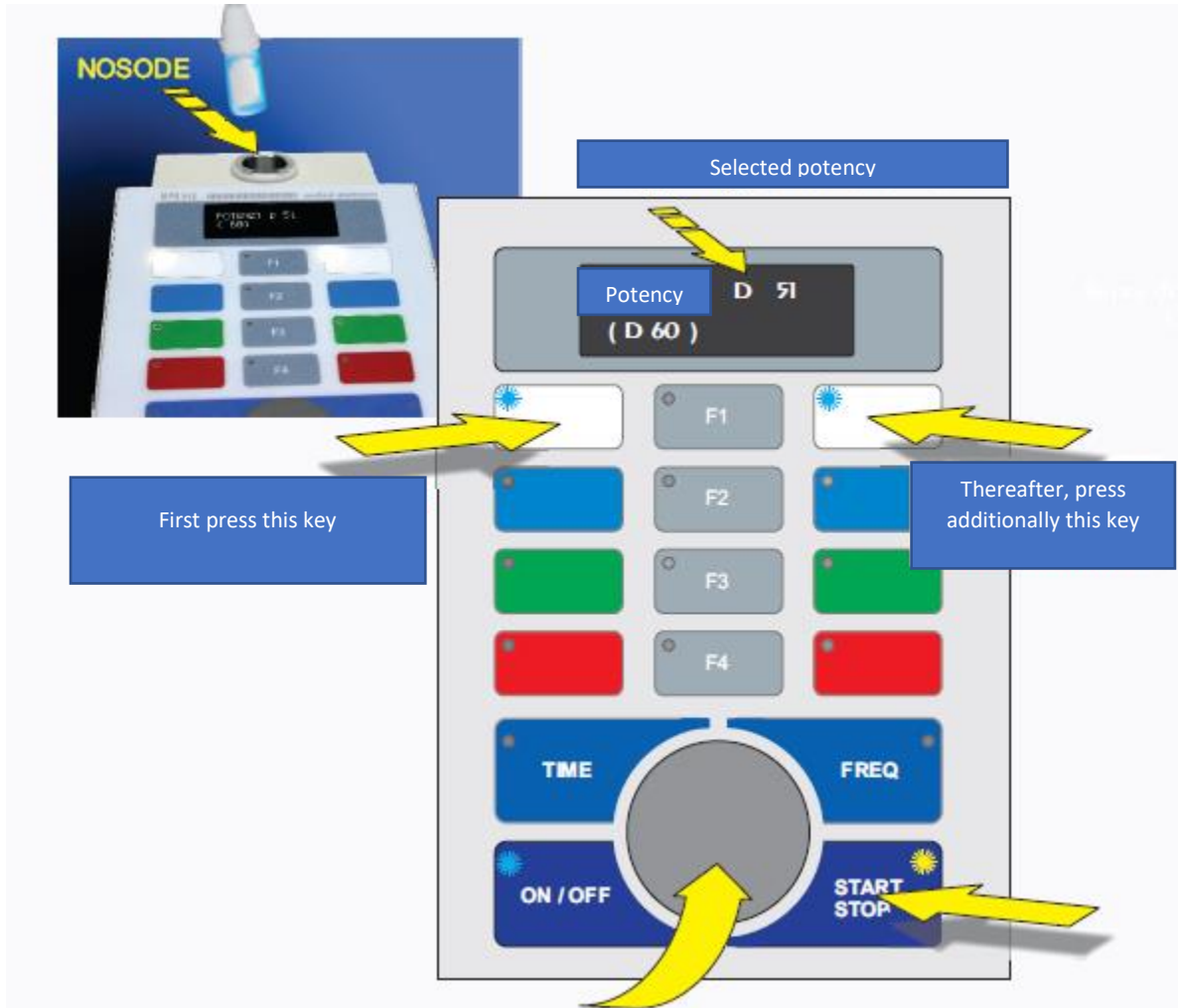


REMEDIES IMPRINTING:

With MPS 912 you can generate homeopathic remedies up to the potency D200. See below the drawing to better understand the process:

1. Put the master probe in the well located on the top/front of the device.

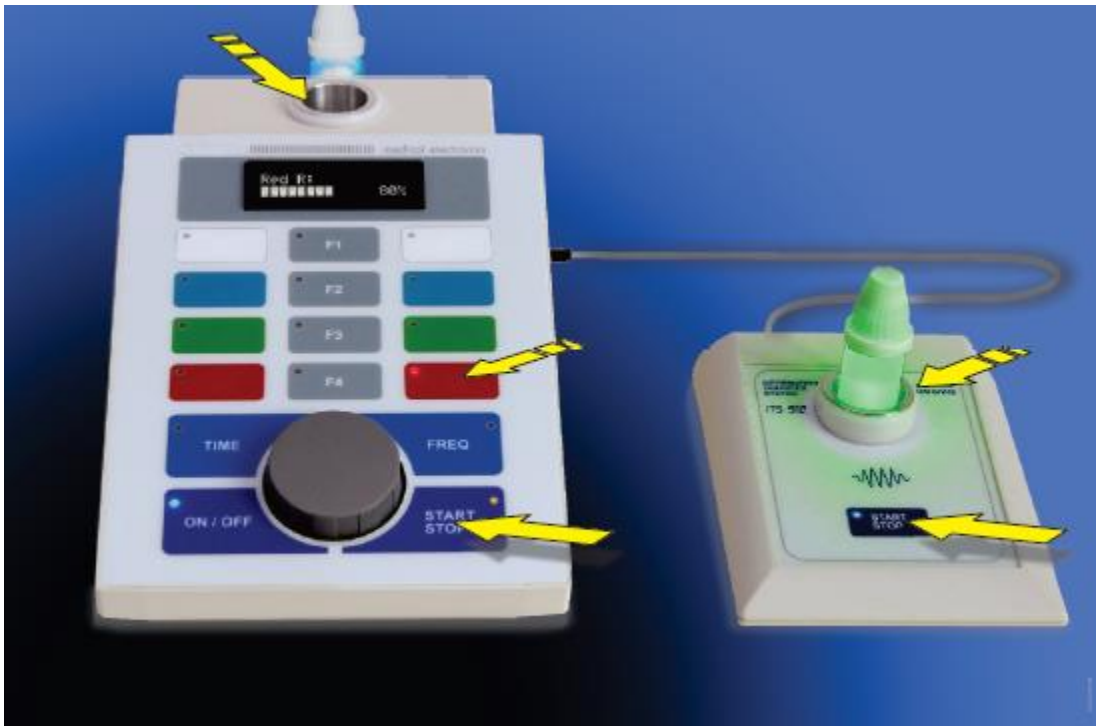
2. Press the left white key and while holding this key pressed, press additionally also the right white key.
3. Press start key. In display you will see the process of potentiation up to the final value selected.
4. Once reached the targeted final potency, the devices shut down automatically.



If you decided to buy also the optional ITS 912 accessory you can transfer remedies information from one remedy to another and create new remedies; follow the following steps:

1. Connect ITS 912 as indicated
2. Start MPS 912 and press start button
3. Select intensity 100% for the right key
4. The remedy you want to copy to be inserted into the dwell of ITS 912
5. Start ITS 912
6. In some milliseconds the transfer is happening between the two vials

7. Stop both devices MPS 912 and ITS 912.



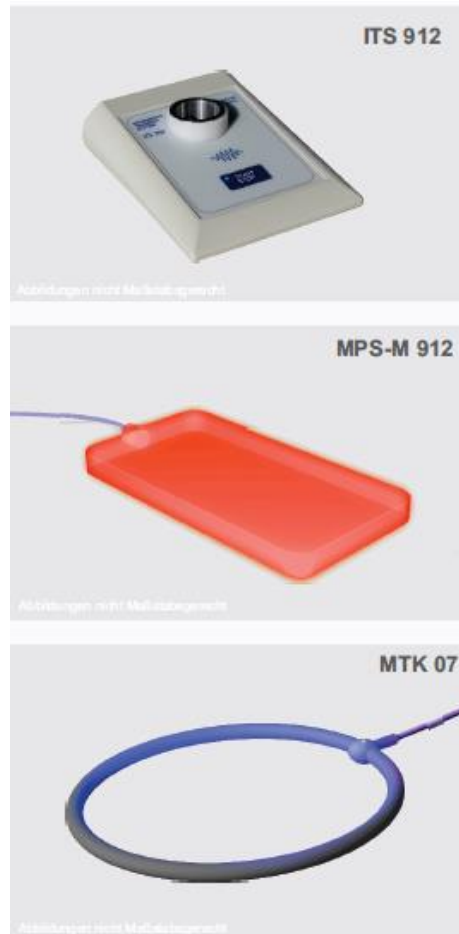
EXTERNAL CONNECTIONS OF OTHER APPLICATORS:

- Very much recommended are ITS 312, Magnetic coil and a laser or just any other audio device, Zappers, radionics devices, every system generating audio signals.
- To activate the right external channels, the color channels must be on RED (right red key). ITS 912 is always connected to the red sight.
- To activate the backside external channels, the color channels must be on RED (left red key, labels as LASER applicators).
- Optional accessories:
- ITS 912 (Information transfer system); can imprint homeopathic remedies as receiver or sender tool. The remedies produced with ITS are very powerful and long lasting.
- MPS M 912: Can transmit the remedies information and frequencies to the foot soles, known to be rich in acupuncture and reflexology points receiving and highly absorbing information.
- MPS can be connected to a tesla coil MKT 270 which is radiating Earth pristine magnetic field; when applying different external audio signals, the coil picks up the frequencies and pulsates/transmits the patient earth, magnetic field plus audio vibrations. The coil must be located on the abdominal zone. There are three different coils sizes, however the 270 mm diameter is mostly used.



OPTIONAL ACCESSORIES

- Foot electrode MPS-M 912
- Adapter for remedies vials (4)
- Magnetic coil MTK 07 (Día 350 mm)
- Remedy maker ITS 912



CLEANING:

Remove normal dust with a clean brush; never use a damp or alcohol dipped cloth to clean the device.

The hand photonic electrodes or foot electrodes can be cleaned only with a plastic mild cleanser.

After 1-2 months you can cleanse the light conductive bar with a mild plastic cleanser same as for PC displays.

For foot electrodes is recommended to use a transparent fresh foil used also for food preservation.

